

FAIRBANKS NIJHUIS™ PACKAGED FIRE PUMP SYSTEMS

FAIRBANKS NIJHUIS™

Packaged Fire Pump Systems

At the heart of our systems you'll find the Fairbanks Nijhuis pumps you've relied on for over 90 years.

Fairbanks Nijhuis offers custom and pre-engineered packaged fire pump systems. These systems are factory assembled and tested, leaving only pipe connections, power connections and structural base grouting to be completed on site. All fire pump packages built to NFPA 20 & NEC standards with UL listed/FM approved components.

Fire Pump Packages Standard Equipment

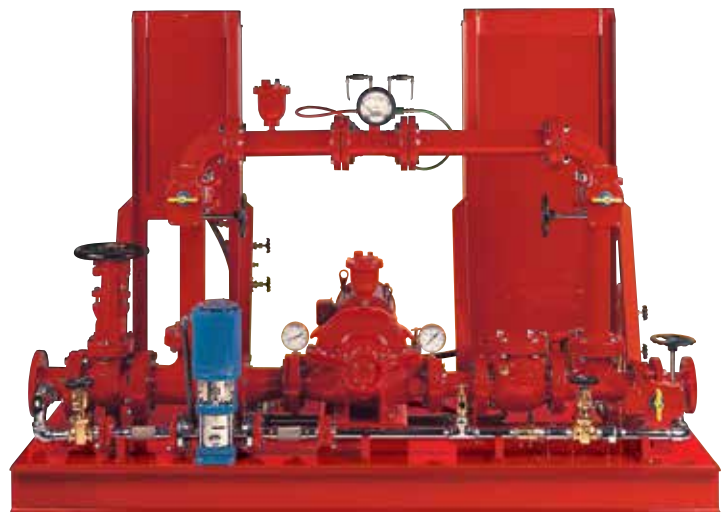
- UL listed/FM approved Fairbanks Nijhuis fire pump
- UL listed/FM approved fire pump controller
- Fairbanks Nijhuis jockey pump
- UL listed jockey pump controller
- Pressure sensing lines complete per NFPA 20
- UL Listed / FM approved OS&Y gate valves, butterfly valves and check valves
- Suction and discharge pressure gauges
- Automatic casing air release valve
- Casing pressure relief valve (electric packages)
- Hose header with valves, caps and chains
- Suction and discharge piping per NFPA 20
- All electrical components pre-wired at factory
- Complete system hydrostatically tested
- Removable lifting lugs

Diesel Driven Fire Pump Packages also Include

- Dual batteries with racks and charger
- UL listed fuel tank sized per NFPA 20
- Residential grade muffler
- Flexible exhaust connector
- Engine cooling loop

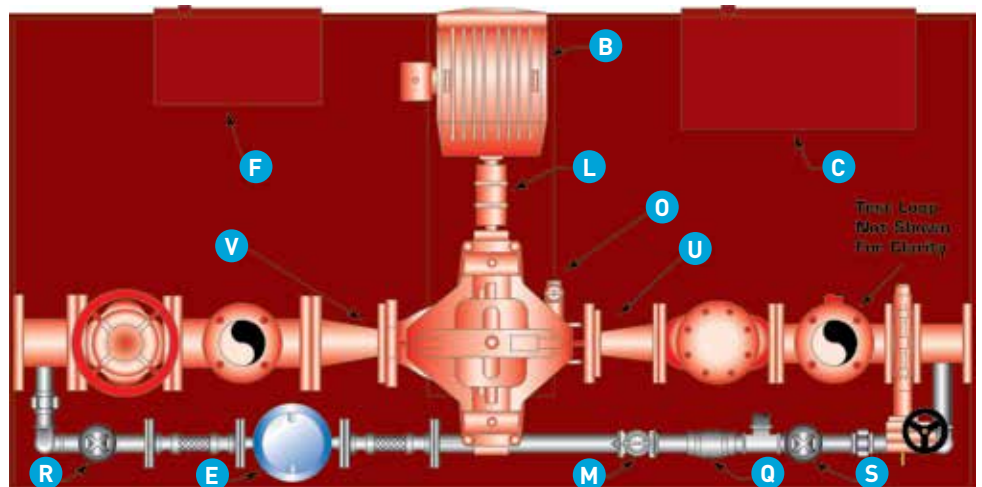
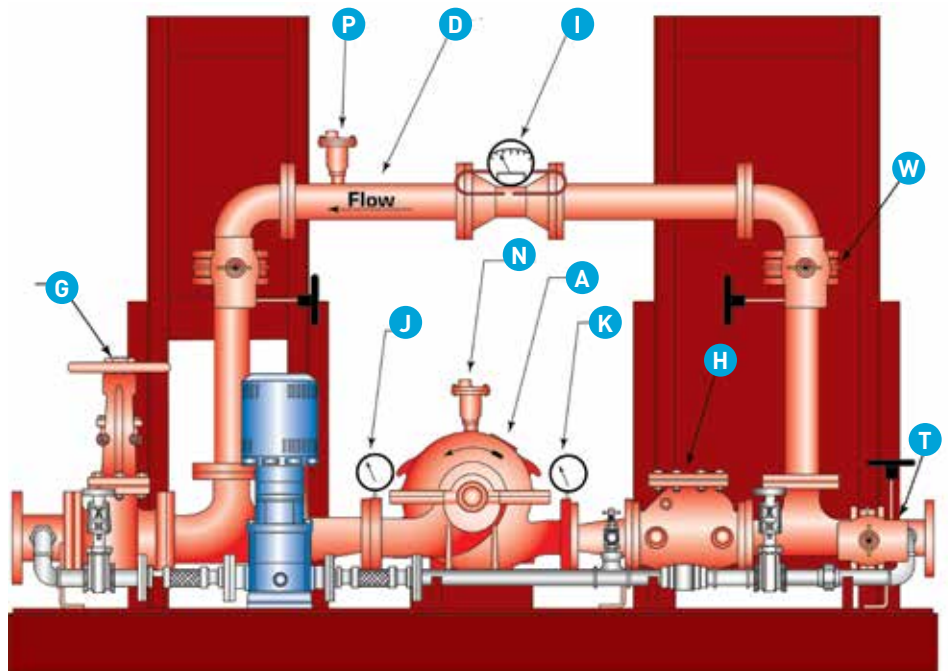
Options Available

- Witnessed and non-witnessed complete system performance test
- Test line outlet to connect to remote tank with UL listed/FM approved flow meter, isolation valves and air release valve
- Test loop back to suction with UL listed/FM approved flow meter, isolation valves and air release valve
- Bypass loop with check valve, isolation valves and air release valve
- Main system pressure relief valve with enclosed waste cone
- Relief valve for jockey pump line
- Double wall fuel tank with low fuel and leak detection alarms
- Backflow preventor
- Critical grade muffler
- Packaged system drains piped to edge of skid
- Complete fire pump house



Pump Features

- A. Fairbanks Nijhuis Fire Pump
- B. Motor
- C. Control Panel (Fire Pump)
- D. Test Loop
- E. Multi-stage Jockey Pump
- F. Control Panel (Jockey Pump)
- G. OS and Y Gate Valve
- H. Swing Check Valve
- I. Flow Meter
- J. Suction Pressure Gauge
- K. Discharge Pressure Gauge
- L. Coupling (Guard Not Shown)
- M. Relief Valve (Jockey Pump Line)
- N. Air Release Valve (Pump Casing)
- O. Relief Valve (Fire Pump)
- P. Air Release (Test Loop)
- Q. Check Valve (Jockey Pump Line)
- R. OS and Y Gate Valve (Jockey Pump Suction)
- S. OS and Y Gate Valve (Jockey Pump Discharge)
- T. Butterfly Valve
- U. Concentric Increaser
- V. Eccentric Reducer
- W. Butterfly Valve (Test Loop)



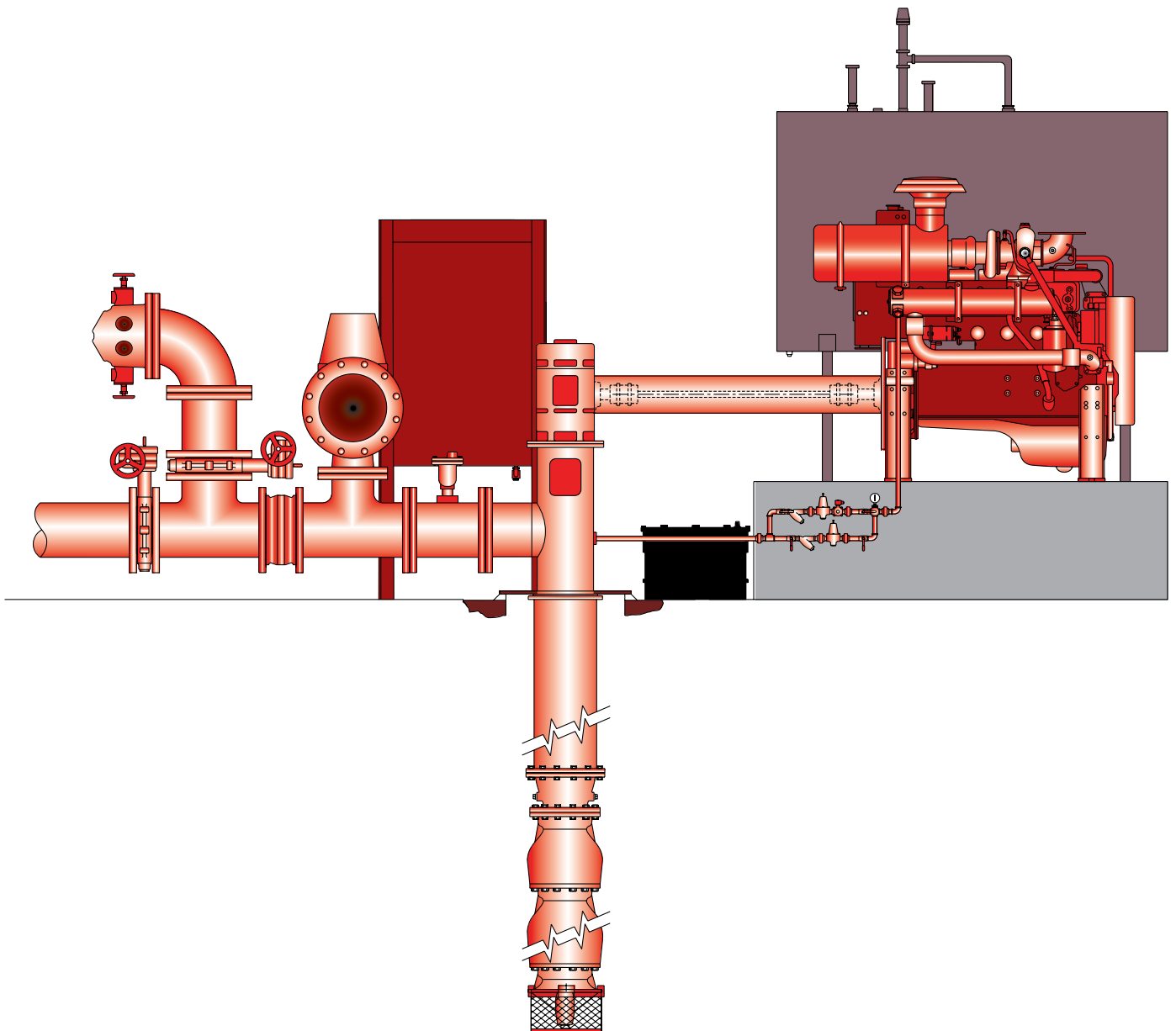
Pump Features

Drawing Component List

	EFPS-1	EFPS-2	EPS-2V	EFPS-3	EFPS-4	EFPS-5	EFPS-6	DFPS-1	DFPS-2	DFPS-3	DFPS-4	DFPS-5	DFPS-6	DEFPS
1 Fairbanks Nijhuis Fire Pump	X	X	X	X	X	X	X	X	X	X	X	X	X	X
2 Coupling (Guard not Shown)	X	X	X	X	X	X	X	X	X	X	X	X	X	X
3 Driver	X	X	X	X	X	X	X	X	X	X	X	X	X	X
4 Control Panel (Fire Pump)	X	X	X	X	X	X	X	X	X	X	X	X	X	X
5 Jockey Pump (JP)	X	X	X	X	X	X	X	X	X	X	X	X	X	X
6 Control Panel (JP)	X	X	X	X	X	X	X	X	X	X	X	X	X	X
7 Relief Valve (Fire Pump Casing)	X	X	X	X	X	X	X							X
8 OS and Y Gate Valve	X	X	X	X	X	X	X	X	X	X	X	X	X	X
9 Eccentric Reducer	X	X	X	X	X	X	X	X	X	X	X	X	X	X
10 Suction Pressure Gauge	X	X	X	X	X	X	X	X	X	X	X	X	X	X
11 Air Release Valve (Pump Casing)	X	X	X	X	X	X	X	X	X	X	X	X	X	X
12 Discharge Pressure Gauge	X	X	X	X	X	X	X	X	X	X	X	X	X	X
13 Concentric Increaser	X	X	X	X	X	X	X	X	X	X	X	X	X	X
14 Main Relief Valve								X	X	X	X	X	X	X
15 Wafer Check Valve	X	X	X	X	X	X	X	X	X	X	X	X	X	X
16 Butterfly Valve (Discharge Side)	X	X	X	X	X	X	X	X	X	X	X	X	X	X
17 OS & Y Gate Valve (JP Suction)	X	X	X	X	X	X	X	X	X	X	X	X	X	X
18 Relief Valve (JP Line)	X	X	X	X	X	X	X	X	X	X	X	X	X	X
19 Check Valve (JP Line)	X	X	X	X	X	X	X	X	X	X	X	X	X	X
20 OS & Y Gate Valve (JP Discharge)	X	X	X	X	X	X	X	X	X	X	X	X	X	X
21 Enclosed Waste Cone								X	X	X	X	X	X	X
22 Butterfly Valve (Hose Header)		X	X	X	X	X	X		X	X	X	X	X	X
23 Hose Header		X	X	X	X	X	X		X	X	X	X	X	X
24 Hose Valve		X	X	X	X	X	X		X	X	X	X	X	X
25 Fuel Tank								X	X	X	X	X	X	X
26 Battery Racks								X	X	X	X	X	X	X
27 Butterfly Valve (Test Loop/Line)				X	X		X			X	X		X	
28 Flow Meter				X	X		X			X	X		X	
29 Air Release (Test Loop/Line)					X		X				X		X	
30 Butterfly Valve (Bypass Line)						X	X					X	X	
31 Wafer Check Valve (Bypass Line)						X	X					X	X	
32 Air Release (Bypass Line)						X	X					X	X	

Pump Features

Fairbanks Nijhuis™ Pump offers vertical turbine fire pump systems for static suction conditions. Vertical turbine systems come complete with pump, driver, controller, flow-measuring device, relief valve with waste cone, check valves, and pressure sensing line.



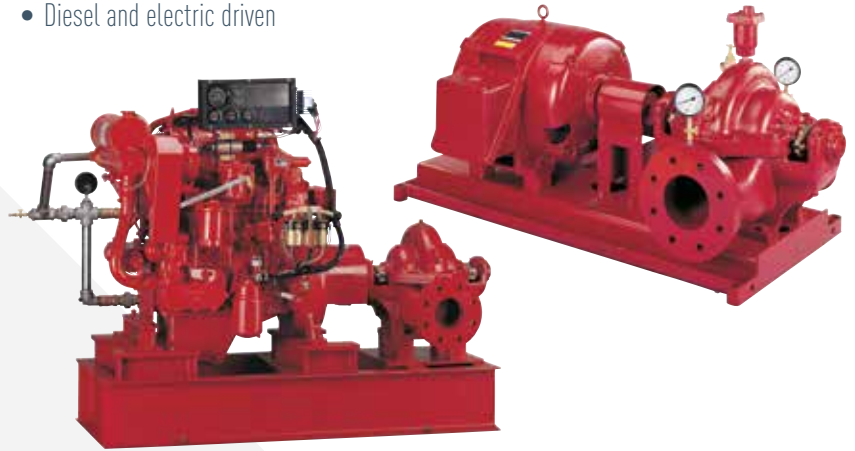
Vertical Turbine

- UL listed and FM approved NFPA-20 design
- Flows from 500 to 4500 GPM
- Pressures from 70 to 387 psi
- Special materials for seawater applications
- Diesel and electric driven



Horizontal Split Case

- UL listed/FM approved NFPA-20 design
- Flows from 250 to 5000 GPM
- Pressures from 40 to 245 psi (40 to 190 psi at 50Hz)
- Diesel and electric driven



Vertical Split Case

- UL listed and FM approved NFPA-20 design
- Flows from 250 to 2500 GPM
- Pressures from 40 to 200 psi (40 to 155 psi at 50Hz)
- Space-saving design



Vertical In-line

- UL listed and FM approved NFPA-20 design
- Flows from 50 to 1500 GPM
- Pressures from 40 to 160 psi (40 to 120 psi at 50Hz)
- Space-saving design





Fire Pump Houses

- Designed to meet specific environmental requirements
- All-steel building
- Easy access entries
- Electric heaters with built-in thermostat
- Continuous duty exhaust fan
- AC motor/solenoid operated louver
- Interior fluorescent and flood light, exterior 70 W HPS light
- Sprinkler system per NFPA
- Finished through wall or floor penetration
- Mini power zone
- Interior wall liner

Summary

- Each unit complete with Fairbanks Nijhuis fire pump, Fairbanks Nijhuis jockey pump, controllers and associated pressure sensing lines, valves, piping and electrical wiring.
- Built to NFPA 20 and NEC standards
- ISO 9001 Facility
- UL listed/FM approved components
- All packaged systems hydrostatically tested
- Packaged systems performance test available
- Electric or diesel driven
- Skid-mounted or completely housed
- Single source responsibility
- ETL third party listed



800 AIRPORT ROAD,
NORTH AURORA, ILLINOIS 60542
www.FairbanksNijhuis.com

3601 FAIRBANKS AVENUE,
KANSAS CITY, KANSAS 66106

Because we are continuously improving our products and services, Pentair reserves the right to change specifications without prior notice.
FMF-02-1044 07/19/13 © 2013 Pentair Ltd. All Rights Reserved.



NEC

