



滨特尔无锡工厂



PENTAIR WUXI

www.pentair.com



PENTAIR AND WUXI

Pentair makes the most of life's essential resources. From our residential and business solutions that help people move, improve and enjoy their water, to our sustainable innovations and applications, we deliver smart, sustainable solutions for life. Our Flow Solutions provides water and fluid handling pump products and solutions for our customers in commercial, residential, agricultural, infrastructure and industrial sectors. We are known through our brands including Aurora, Fairbanks Nijhuis, Myers, Hydromatics, Flotec, Sta-Rite, Berkeley, Nocchi, Jung and Southern Cross.

Pentair invested in Wuxi in 2011, since then Wuxi factory became a Pentair fully owned facility. 130 km North West of Shanghai, Wuxi factory is strategically located in the heart of China manufacturing hub, Yangzi River Triangle Industrial Zone. The factory is ISO 9001 certified and serves customers mainly in the field of commercial and industrial water supply and treatment. The product portfolio we offer range from End Suction pumps, Horizontal Split Case pumps, Horizontal Multi-Stage Pumps, Vertical Multi-stage pumps and Vertical Inline pumps.



As a global leader in fire pump package system, Pentair is committed to provide our customers around the globe with high quality products and world class local support. Thus in 2015 Pentair further invested in Wuxi with UL/FM manufacturing capability to serve our customers better in Asia and Pacific.

The Wuxi facility is certified by UL and FM to manufacture, impeller trimming, pump package assembly, distribution, and production testing of fire pump package. Wuxi can package Aurora and Fairbanks Nijhuis axial split case and horizontal end suction type centrifugal fire pumps with rating up to 4500 gpm that require no more than 560hp, as well as leakage test at up to 1100 psi.

OUR COMMITMENT

At Pentair we adhere to high stand of performance and we value customer first. We actively pursue continuous improvement and adapt towards customer needs. We are here to support you with our premium quality of products and local presence. Let's work together towards the path of success...

Facilities

TESTING CAPABILITY

Flow up to 7,400 gpm (with positive suction)

Pressure up to 500 psi

600hp in 50/60 hz

TYPE OF TEST

Hydrostatic Test

Performance Test per H.I and ISO 9906 Grade 2B

NPSH Test, Sound Test, Vibration Test



OUR TEST BED INCLUDES:

- Two Cummins KTA19G4 Diesel Engines with Stamford HCl544C generators with combined output of 800kw in both 400V/50hz and 460V/60hz
- ABB ACS800 500kw and ACS 510 110kw VFDs and Siemens Micromaster 430 160kw VFD
- Test Loops: 3 independent test loops: 12", 8", 4". Both 4" and 12" loops are rated for 25bar, 8" loop is rated for 40 bar
- Instrumentation: Instrumentation accuracy meets and/or exceeds the requirement by Underwriters Laboratories and Factory Mutual. Instruments include Krohne Magnetic-inductive flowmeters, Rosemount pressure transmitters, dial pressure gauges, torque meters, dynamic balancer, scale, stop watch, digital calipers...etc. All calibrated by laboratories that are accredited to the requirements of ISO/IEC 17025, meets the standard set by Underwriters Laboratories and Factory Mutual
- Control Station: State of the Art PLC with LabVIEW and Data Acquisition System from National Instruments, custom designed/programmed to meet our testing requirement, optimizing tests for time, throughput, and reliability. Test data is captured electronically during the test and pump curve is generated as soon as testing is finished, eliminate human error from data input/transfer.
- Lab Computer: Robust industrial grade computer to ensure reliability and accuracy of data capturing, processing, and storage.
- Six dedicated electric motor from WEG for pump testing – from 55kw to 450kw (2p and 4p).
- Underground concrete water tank with capacity of 110,000 gallon. Fairbanks Nijhuis 19" VTP is installed as booster pump to ensure positive suction during testing.





KEY CONTROL POINTS

Wuxi is certified by UL and FM as an alternate manufacturing site under North Aurora and Kansas city

- Aurora/Fairbanks Nijhuis Pump has design control for the actual pump units
- Strictly following the same stringent process in Aurora/Fairbanks Nijhuis Pump
- Pump to have performance test and hydrostatic test as per UL/FM requirement
- Subject to quarterly audit by UL and FM



FEATURES

Designed and built per NFPA20 for maximum reliability

Designed and built per QCVN 02:2020/BCA

60 Hz and 50 Hz electric and diesel speeds

Designed for easy maintenance without interfering with piping

Open or enclosed lineshaft construction

Packaged systems available

HORIZONTAL AND VERTICAL TURBINE PUMP

Pump Features:

- Bronze impeller
- Cast iron or ductile iron casings
- Clockwise or counterclockwise rotation (electric only)
- Casing wear rings
- Renewable shaft sleeves
- Grease lubricated long life bearings
- Packed stuffing box



Horizontal Split Case (Electrical)

Rated Capacity	Rated Pressure
250 – 4500 GPM	40 – 506 PSI



Horizontal Split Case (Diesel)

Rated Capacity	Rated Pressure
250 – 4500 GPM	40 – 506 PSI

Fire Protection

CUSTOMER BENEFITS

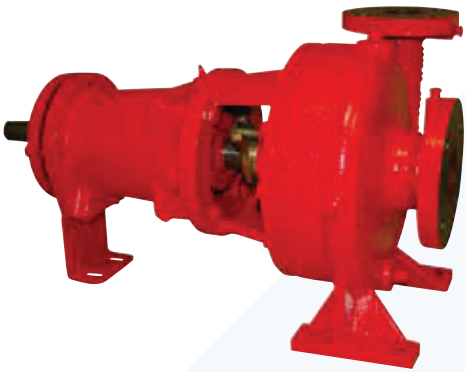
Customers can benefit from our localization efforts for:

- North American premium brand to manufacture UL/FM fire pumps in the region
- Lead times as low as 6 weeks
- UL/FM certified Live Test Bed for FAT's
- Dedicated regional team for after sales, technical support, and customer service
- Spare Parts local availability
- Freight advantage
- Local built to standard Vietnam fire protection QCVN02:2020/BCA

END SUCTION

Pump Features:

- Stainless steel impeller
- Renewable shaft sleeve
- Ductile iron casing
- Carbon steel shaft
- Packed stuffing box
- Grease lubricated long life bearings
- NEMA-HI T-frame motor
- Diesel engine drive option
- Casing feet for easy back pullout



End Suction

Rated Capacity	Rated Pressure
50 –1500 GPM	40 – 225 PSI



AURORA 3600 / FAIRBANKS NIJHUIS 1300



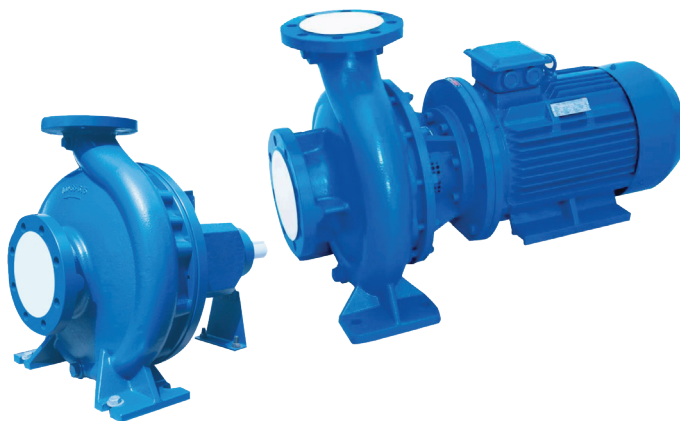
Pump Features:

- Superior hydraulic design for higher efficiencies and reduced operating cost.
- High efficiency double curvature impeller vanes.
- Packed ball bearings.
- Back-pullout design allows easy removal of rotating element
- Heavy duty sealed for life grease

Technical Specifications

Capacity	Head
~1800m ³ /h	~160m

PWTEF / PWTEC



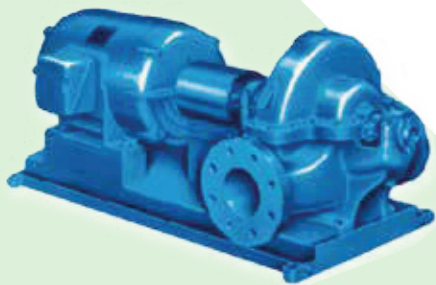
Pump Features:

- EN 733 / DIN24255 standard
- 10 bar design working pressure
- Closed couple model PWTEC
- Flexible coupled frame mounted PWTEF
- Heavy duty power frames with minimum 8,000 hours L10 bearing life

Technical Specifications

Capacity	Head
~1500 m ³ /hr	~158m

AURORA 410 / FAIRBANKS NIJHUIS1800



Pump Features:

- Dynamically balanced impellers reduced vibration and noise.
- Bronze fitted pump construction and bronze shaft sleeves
- Twin volute on 10" and larger pumps
- Regreaseable ball bearings
- Double row ball bearing (outboard)

Technical Specifications

Capacity	Head
~3407m ³ /h	~202m

Commercial and Industrial

PWT

Pump Features:

- Precise casting for volute and impeller
- Closed and full balanced impeller to assure stable operation
- Back-pullout design simplifies disassembly
- Available in various corrosion resistant material SS304,316,Duplex Stainless

Technical Specifications

Capacity	Head
~1800m³/h	~250m



PWTNC



Pump Features:

- Compact structure design, reliable sealing design
- Submersible motor class F with IP68 rating
- Leak detection probes in oil and motor chamber (above 30kW)
- Wild range performance for high pressure application
- Corrosion resistance material available

Technical Specifications

Capacity	Head
4000 m³/hr	70 m

PVM(I,X)



Pump Features:

- Stage construction with stainless steel impellers, chambers and pressure casing
- Cartridge mechanical seal for easy maintenance.
- In-line design, with flange or Victaulic connections,
- Equally sized suction and discharge port
- Standard with IEC Motor

Technical Specifications

Capacity	Head
~180m³/h	~330m



PENTAIR WUXI FACTORY

No. 10, Jiaye Road, Wuxi City
Jiangsu Province, China

TEL: +86 21 32114588

Email: Application.SH@pentair.com

www.pentair.com

Because we are continuously improving our products and services, Pentair reserves the right to change specifications without prior notice.
Pentair Ltd. All Rights Reserved.

