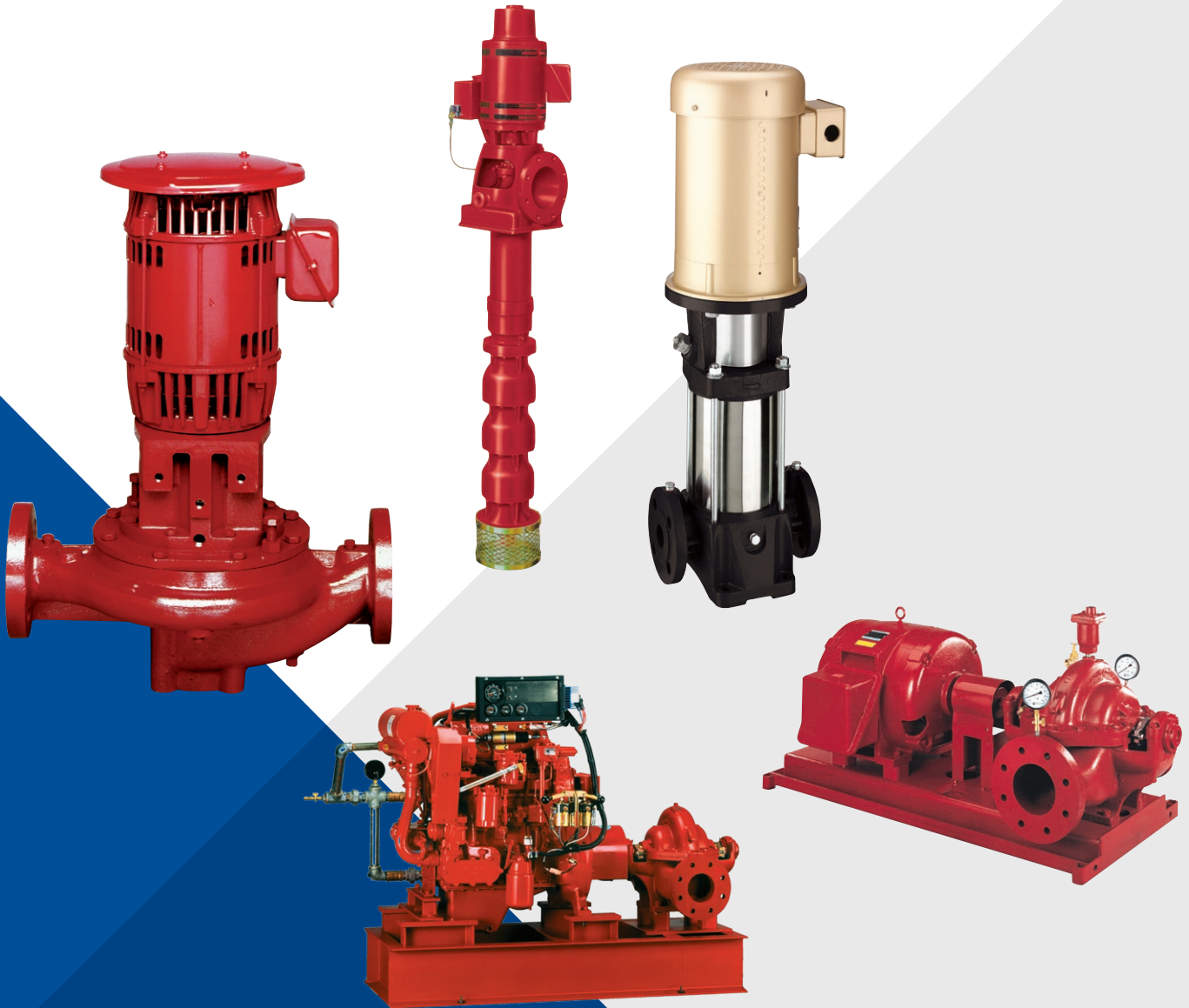


# DEPENDABLE PUMP SOLUTIONS FOR FIRE PROTECTION



# GLOBALLY RECOGNIZED FIRE PUMP SOLUTIONS FOR FIRE PROTECTION

## PENTAIR AURORA FIRE PROTECTION PUMPS CAN HELP PROTECT YOUR PROPERTY IN CASE OF FIRE

When you install a fire protection system, you hope for the best but prepare for the worst. If tragedy strikes, you need reliable fire pump solutions ready to spring into action at peak performance.

Trust Aurora Fire Protection Pumps to provide you with dependability and efficacy. Our fire pumps deliver a steady and specific flow and pressure to the sprinkler lines in a building. During a fire, when the sprinkler heads open, the water begins to flow, which reduces the pressure. Our fire pumps make sure the flow and pressure do not drop. This makes Aurora Fire Protection Pumps effective when suppressing fires. Our pumps will keep running until the fire chief presses the stop button in the pump room.

## COMMITTED TO DELIVER FIRE PUMP EXCELLENCE

- ◆ More than 100 years of proven quality, rugged reliability and fire protection expertise
- ◆ Our ISO 9001 certified quality system ensures high-quality fire protection solutions
- ◆ Pump configuration and selection software to help select the best pumps and systems
- ◆ Expedited lead times for select core models with Red Hot Quick Ship Program to meet time-critical requirements
- ◆ Qualified distribution network to provide complete pump solutions for fire protection around the world
- ◆ Outstanding customer service to help keep fire pump systems at peak performance for years to come
- ◆ Top of the line hydraulics that leverages efficiencies and maximizes your return on investment

### HORIZONTAL SPLIT CASE

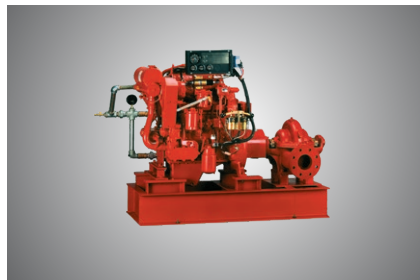


#### MODELS 471, 481, 485, 491, 492

Flow: 250 to 5,000 GPM (56.8 to 1,135 m<sup>3</sup>/hr)  
Pressure: 40 to 435 PSI (2.7 to 30 bar)

- ◆ Use in commercial or industrial applications
- ◆ Enjoy ease of maintenance
- ◆ Select models available with expedited lead times through our Red Hot Quick Ship Program

### DIESEL-DRIVEN SPLIT CASE



#### MODELS 471, 481, 485, 491, 492

Flow: 250 to 5,000 GPM (56.8 to 1,135 m<sup>3</sup>/hr)  
Pressure: 40 to 435 PSI (2.8 to 30 bar)

- ◆ Use in commercial, industrial and marine applications
- ◆ Enjoy ease of maintenance
- ◆ Select models available with expedited lead times through our Red Hot Quick Ship Program

### VERTICAL SPLIT CASE



#### MODEL 483

Flow: 250 to 2,500 GPM (56.8 to 568 m<sup>3</sup>/hr)  
Pressure: 40 to 200 PSI (2.7 to 13.8 bar)

- ◆ Use in commercial or industrial applications
- ◆ Enjoy ease of maintenance
- ◆ Take advantage of our electric driven model pump

# INSIST ON PENTAIR FIRE PROTECTION PUMPS

## SINGLE STAGE VERTICAL IN-LINE



### MODEL 383

Flow: 50 to 1,500 GPM (11.3 to 340 m<sup>3</sup>/hr)  
Pressure: 40 to 159 PSI (2.7 to 11 bar)

- ◆ Service the pump without disturbing surrounding piping
- ◆ Save on space with our vertical design
- ◆ Enjoy years of service with a bronze-fitted pump construction
- ◆ Select models available with expedited lead times through our Red Hot Quick Ship Program

## VERTICAL TURBINE



### MODELS FEM, FGM, FCM, FGH

Flow: 250 to 4,500 GPM (56.8 to 1,022 m<sup>3</sup>/hr)  
Pressure: 50 to 370 PSI (3.4 to 25.5 bar)

- ◆ Use in commercial or industrial applications
- ◆ Take advantage of the special materials offered for seawater applications
- ◆ Select from electric and diesel driven model pumps

## END SUCTION



### MODEL 384

Flow: 50 to 1,500 GPM (11.3 to 340 m<sup>3</sup>/hr)  
Pressure: 40 to 225 PSI (2.7 to 15.5 bar)

- ◆ Select from electric and diesel speeds
- ◆ Maintain your pump with ease with back pullout design and without disconnecting the pipe
- ◆ Take advantage of a frame mounted design
- ◆ Retrofit this pump with its small footprint
- ◆ Leverage this pump for installations such as schools, office buildings and hospitals

## JOCKEY PUMP



### MODELS PVM & PVMX

Horsepower: 1/2 to 40  
Flow series: 1, 3, 5, 10, 15, 20, 33  
Capacity: up to 210 GPM (47.6 m<sup>3</sup>/hr)  
Pressure: 330 PSI (22.7 bar)  
Head: 800 feet (244 m)  
Temperature: 250°F (121°C)

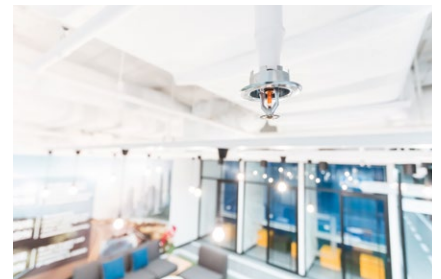
- ◆ Replace cartridge mechanical seal easily without dismantling the pump
- ◆ Enjoy many years of service with our cast iron or 316 stainless materials
- ◆ Retrofit easily in existing and new installations
- ◆ Take advantage of durable TEFC motors

## ACCESSORIES



- ◆ Casing relief valve/air relief valve
- ◆ Eccentric suction reducers and concentric discharge increasers
- ◆ Test manifold, hose valves and ball drip valve
- ◆ Main relief valve and waste cone
- ◆ Flow metering systems
- ◆ Diesel batteries, racks and cables
- ◆ Double wall fuel tanks and fittings
- ◆ Diesel engine mufflers
- ◆ Exhaust flex connectors`

## RED HOT FIRE PUMP QUICK SHIP PROGRAM



With lead times ranging from 10 to 20 business days for our most popular fire pump selections, you can schedule more jobs for critical applications.

To find more information and connect with an Authorized Distributor, visit [pentair.com/aurora](http://pentair.com/aurora).



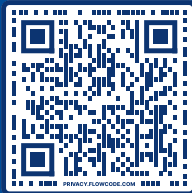
# YOUR PUMP PARTNER FOR THE WHOLE BUILDING

Protecting legacies like yours for more than a century

Our extensive pump portfolio, crafted with a tradition of quality and excellence, has countless applications in commercial buildings. Whether it's fire suppression for safety or HVAC and boosting applications for comfort, your building is covered with dynamic water movement solutions that fit your needs.

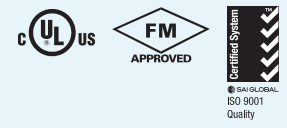
No matter where it's used, you can trust that your pump is backed by a dedicated team providing unwavering support throughout its lifetime.

Because every decision counts when selecting pump equipment that protects your building and the people inside.



EXPLORE OUR PUMP PORTFOLIO

FIRE SUPPRESSION • HVAC PRESSURE BOOSTING



800 Airport Road | North Aurora, IL 60542 | USA | PH: 630.859.7000 | [pentair.com/aurora](http://pentair.com/aurora)

UL and the UL logo are trademarks of UL LLC.  
All FM Approvals certification marks are the sole property of FM Approvals LLC.  
All indicated Pentair trademarks and logos are property of Pentair. Third party registered and unregistered trademarks and logos are the property of their respective owners.  
©2024 Pentair. All Rights Reserved.

AF-02-1001 (08-15-24)